



The continental margin of East Africa Exploration Potential

MDOIL



Please find attached an updated and finalised contents list for JEBCO's, in association with Global explorations Services', east coast Africa exploration review / report.

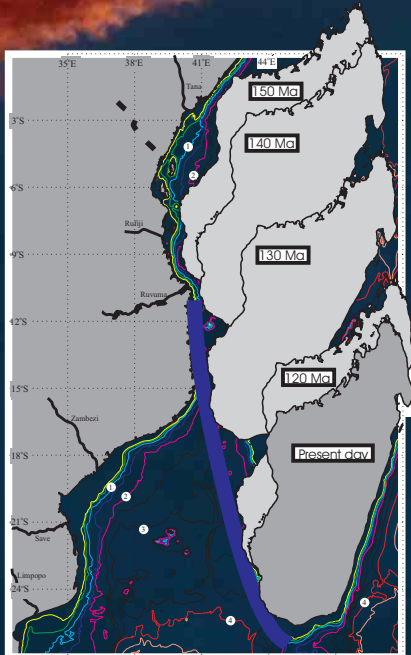
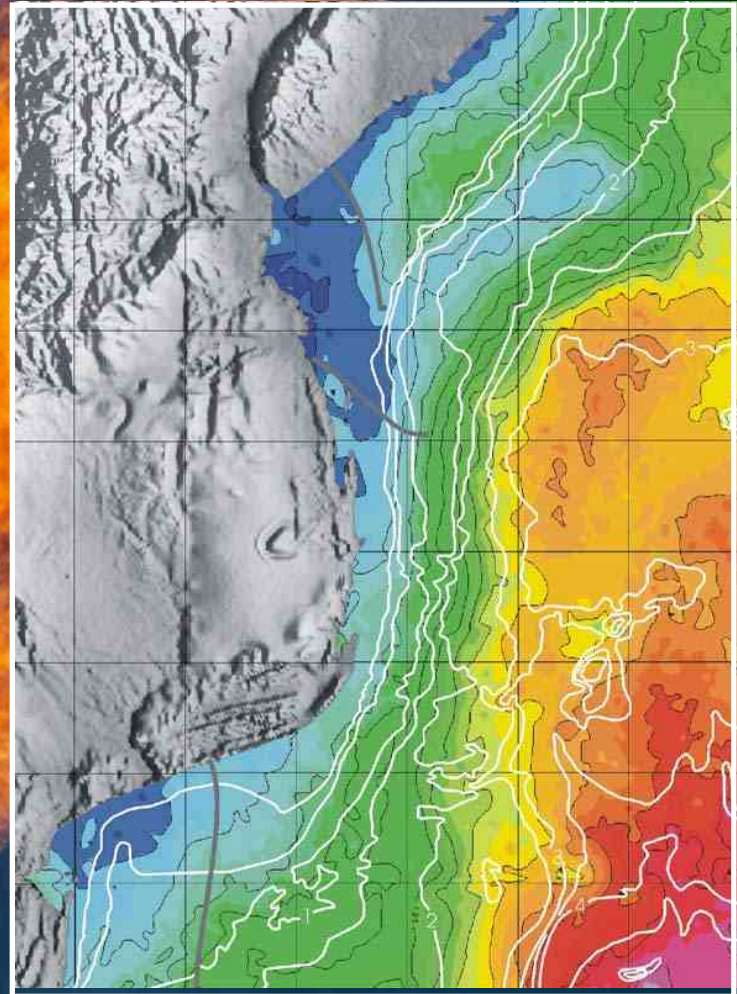
The report is available a cost of US\$15,000.

This new report, based on satellite gravity data, provides a novel insight into exploration opportunities in offshore Kenya, Tanzania, Mozambique and Madagascar.

This regional project was undertaken, in part to support JEBCO's exploration plans in east Africa. Some of the findings were presented at the recent Houston Geological Society and Petroleum Exploration Society of Great Britain's conference held in August in London.

The work includes details of Global Exploration Services' (GES) pressure controlled basin modelling approach, exploration insights from Nick Cameron and is held together by the gravity interpretations undertaken by Dr John Milsom of the University College of London.

To reserve your copy please complete the application form, print it out and send it by fax or e-mail to MDOIL.



Cost US\$ 15,000

The report is available as a CD-ROM

A bound copy is available for an additional US\$100

Additional copies (single company usage) US\$100

THE CONTINENTAL MARGIN OF EAST AFRICA:

EXPLORATION POTENTIAL

Dr. John Milsom (UCL) and Nick Cameron (GeoInsight)
with contributions by Dr. Andy Carr (GES) and Chris Matchette-Downes (Now MDOIL
Limited, then JEBCO)

CONTENTS

1. INTRODUCTION Kenya to Mozambique

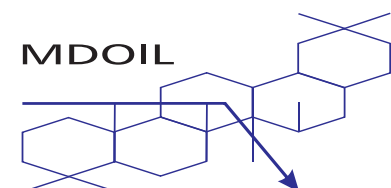
2. EXPLORATION APPROACHES

- 2.1 Satellite gravity Brief description
- 2.2 Auxiliary potential field data Availability and usefulness of onshore gravity and public-domain magnetic data
- 2.3 Bathymetry and topography Chiefly pointing out that, in detail, the bathymetry is inaccurate in many places. Topography also included as useful to locate submarine deltas
- 2.4 Geology Brief summary of the geological sources used, including sources of plate tectonic reconstructions
- 2.5 Pseudo wells Brief summary of the techniques used to construct pseudo wells. The sites are west of Simba-1, Kenya (Pemba) and Pande, Mozambique (Barra), Majunga (off and onshore combination), Madagascar (Mahajamba)

3. REGIONAL EVOLUTION AND HYDROCARBON IMPLICATIONS Plate tectonic Evolution to include the Karroo plume

4. GRAVITY FIELDS AT CONTINENTAL MARGINS

- 4.1 Controls on patterns of free-air and Bouguer gravity
- 4.2 Gravity segment analysis Brief summary of the ways in which the gravity data have been used to define segments
 - 3.1. Setting the scene
 - 3.2. Implications for the petroleum geology
 - 3.3. Basin modelling assumptions for the Somali Basin
 - 3.4. Source rocks
- 4.2.1 Patta
- 4.2.2. Pemba
- 4.2.3. Mafia
- 4.2.4. Ruvuma
- 4.2.5. Davie
- 4.2.6. Ligonha
- 4.2.7. Pebane
- 4.2.8. Zambezi
- 4.2.9. Save
- 4.2.10. Barra
- 4.2.11. Limpopo



- 4.2.12. Onilaky
- 4.2.13. Morondava
- 4.2.14. St. André
- 4.2.15. Mahajamba
- 4.2.16. Mitsio

5. PROSPECTIVITY PRIORITISATION

- 5.1 Continental margin hinge lines and their play implications
- 5.2 Source-reservoir couplets
- 5.3 Rankings by area

6. THE WAY FORWARD

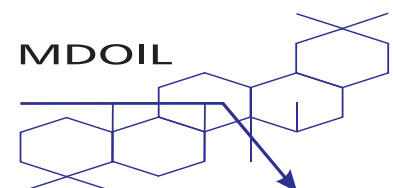
- 6.1 Play facies maps
- 6.2 Systematic pseudowell programme
- 6.3 Targeted seismic acquisition
- 6.4 Introduction to the Tugela Cone initiative
 - 6.4.1 The geological setting
 - 6.4.2 Exploration history summary
 - 6.4.3 Reservoir

7. REFERENCES

8. TABLES

9. FIGURES

Appendix A - DSDP coreholes



The continental margin of East Africa Exploration Potential APPLICATION FORM

I wish to licence JEBSCO's East Africa report

Name

Address

.....

.....

tel

e-mail

Authorised by

Position

Purchase Order Number or reference

Date

Signature

I would like (please tick as appropriate)

- A single company user licence (CD-ROM) for the JEBSCO East Africa continental margin review at US\$15,000
- A bound copy is available for an additional US\$100
- additional bound copies

Please fax form back to MDOIL Limited on +44 (0) 1628 487268

MDOIL Limited
68 Glade Road,
Marlow, Bucks,
SL7 1DH,
England
Tel +44 (0) 1628 487268
www.mdoil.co.uk
e.mail cjmd@mdoil.co.uk

